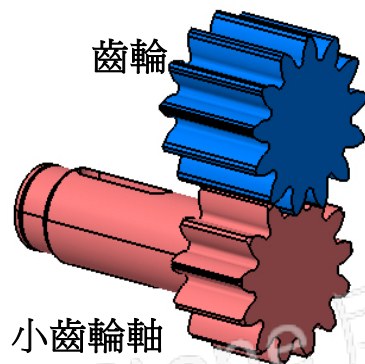


齒輪組-結構安全分析

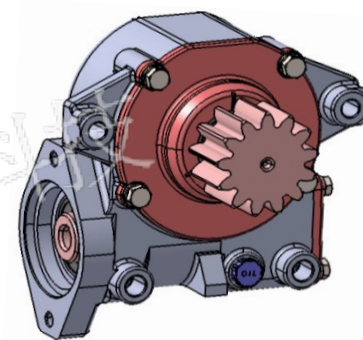
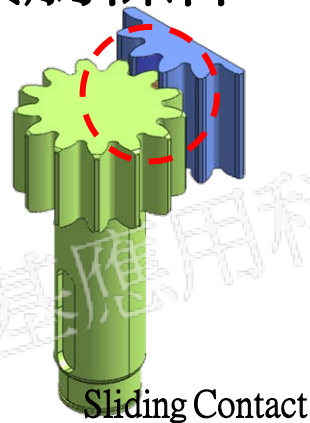
•NFX求解類型

- 線性結構分析
- 疲勞分析

分析模型



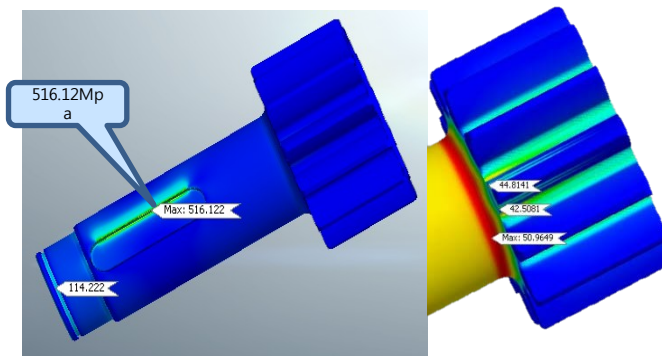
接觸條件



產業應用案例



分析結果



輸送機台-玻璃變形分析

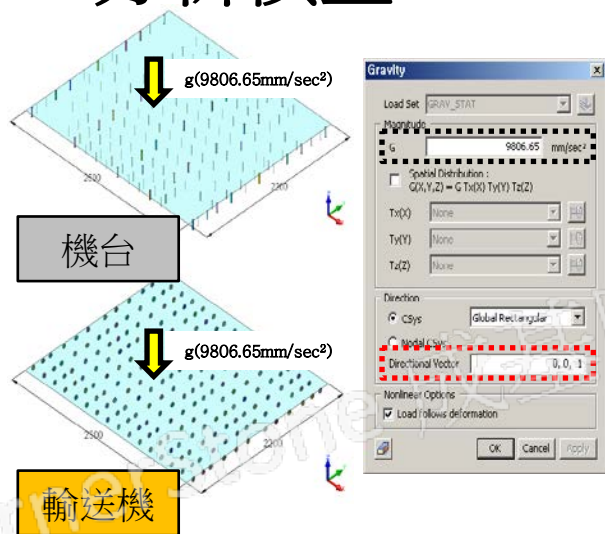
•NFX求解類型

- 幾何非線性
- 材料非線性
- 接觸非線性

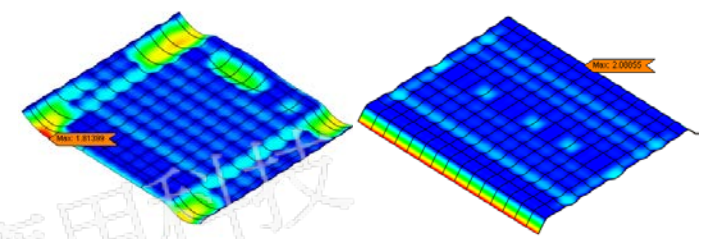
產業應用案例



分析模型

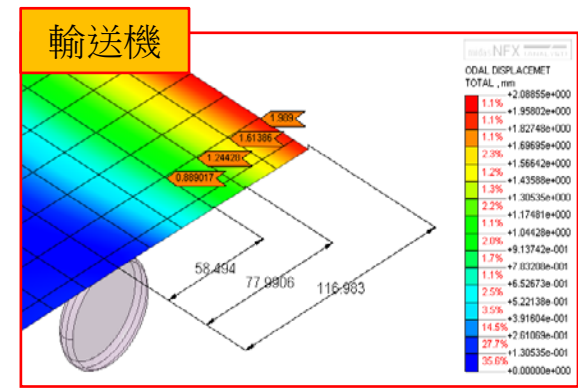
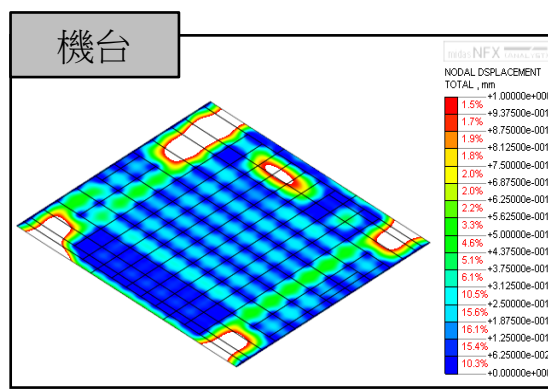


分析結果



機台:最大變形1.8mm 機台:最大變形2.1mm

Glass 厚度	分析類型	機械		輸送機	
		最大應力 (N/mm ²)	最大位移 (mm)	最大應力 (N/mm ²)	最大位移 (mm)
0.3t	線性	16.8	23.1	5.2	2.6
	非線性	7.4	1.8	4.7	2.1
0.5t	非線性	6.1	1.6	3.2	0.9

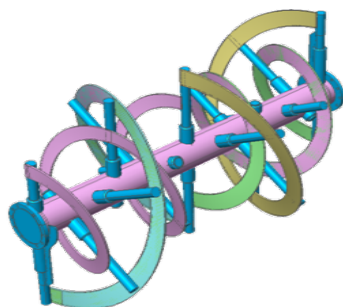


攪拌機-結構疲勞分析

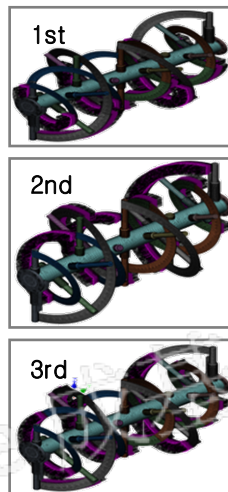
•NFX求解類型

- 線性結構分析
- 疲勞分析

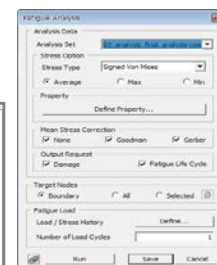
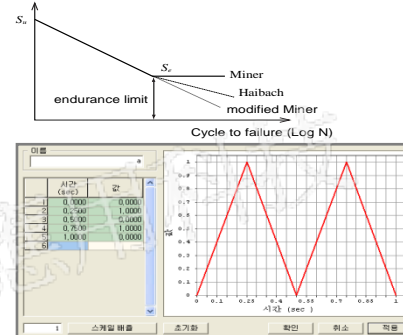
分析模型



邊界條件



.S-N Curve Data

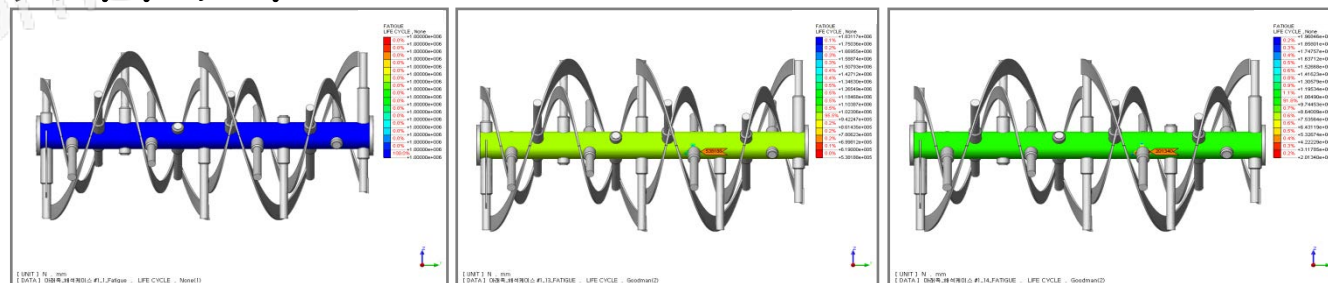


<Fatigue Function>

產業應用案例



分析結果



Mean Stress Correction	Case 1 : 0.08MPa		Case 2 : 0.10MPa		Case 3 : 0.12MPa	
	Life Cycle		Life Cycle		Life Cycle	
	最高	最低	最高	最低	最高	最低
Good-Man	1.00E+6	1.00E+6	1.83E+6	8.38E+5	1.96E+6	2.01E+5

切銷刀具-預應力動態分析 midas NFX

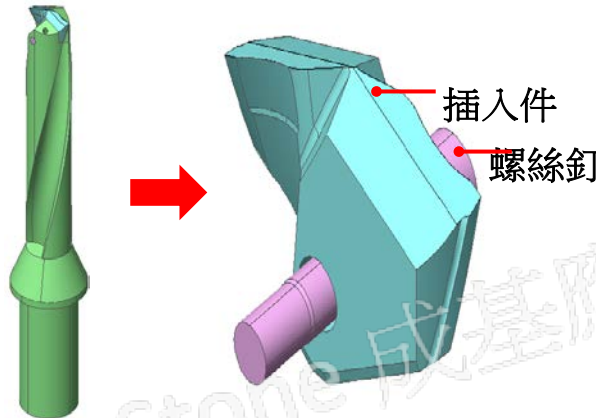
•NFX求解類型

- 模態分析
- 瞬態響應分析

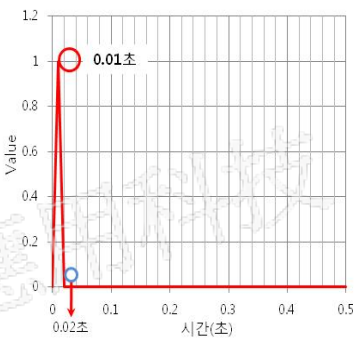
產業應用案例



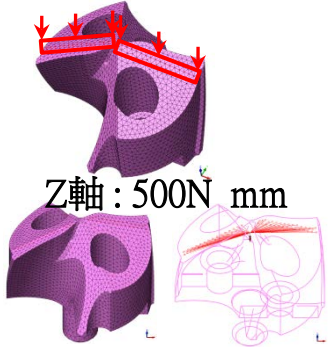
分析模型



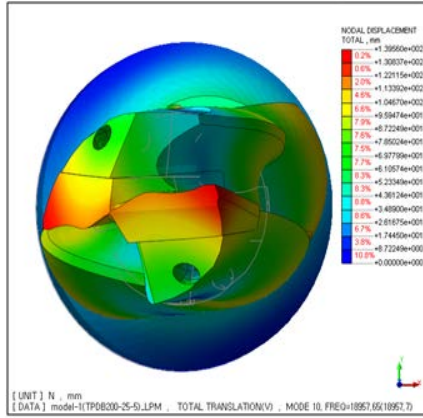
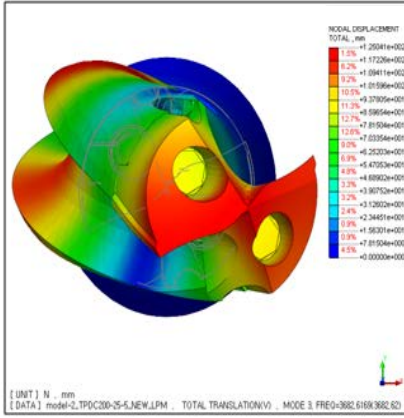
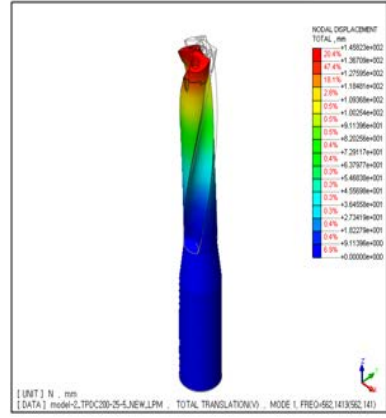
邊界條件



Z軸 : 500N



分析結果

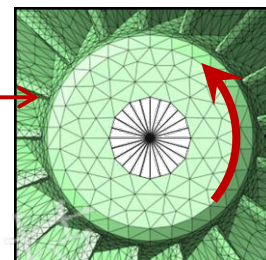
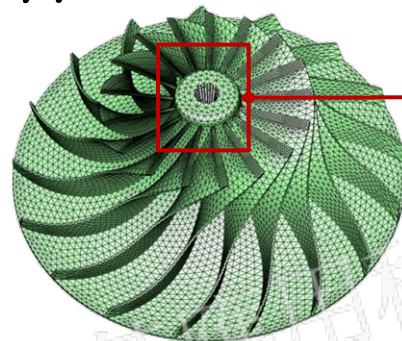
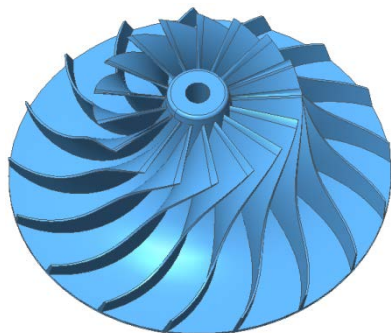


葉輪-結構強度分析

•NFX求解類型

•線性結構分析

邊界條件



外力

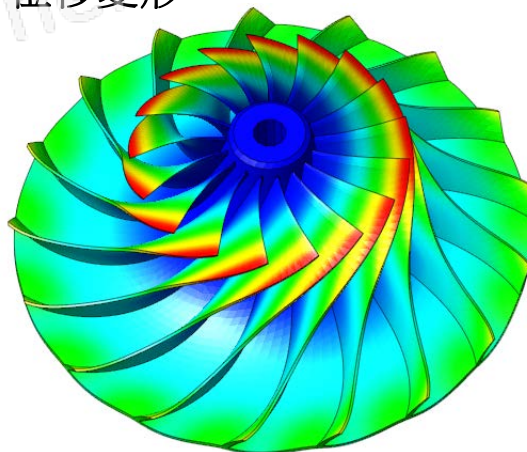
軸心剛體拘束

產業應用案例

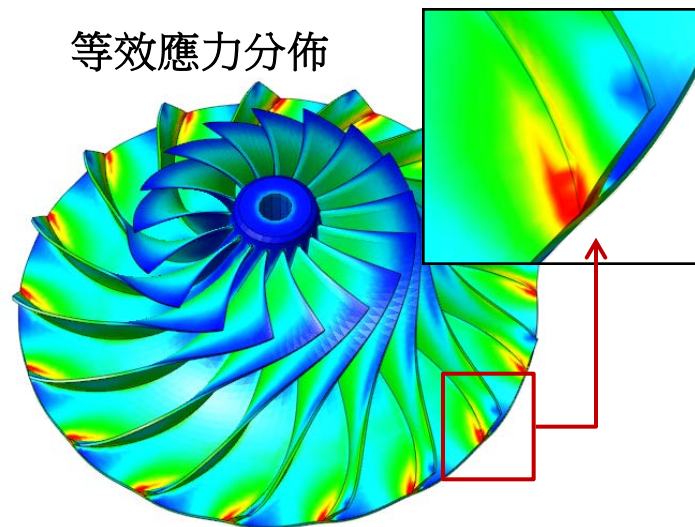


分析結果

位移變形



等效應力分佈

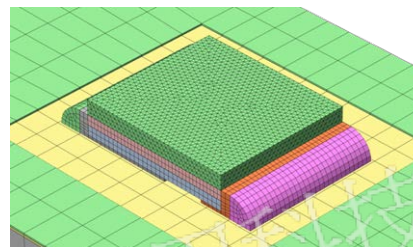
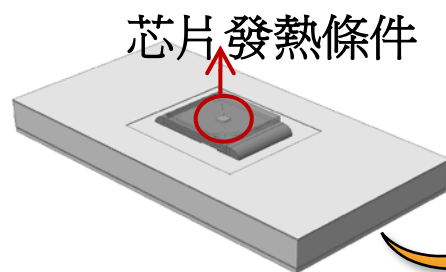


背光模組-熱分析

•NFX求解類型

•熱分析

邊界條件

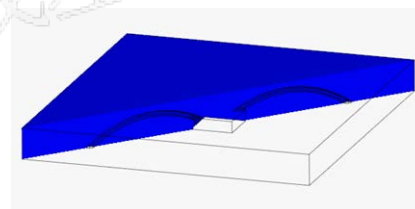
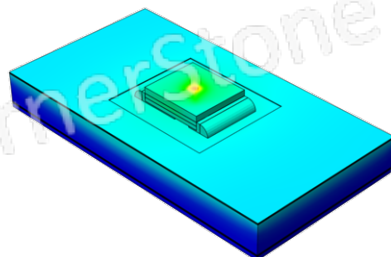


立方/混合四面體網格

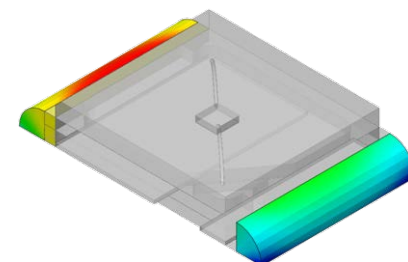
產業應用案例



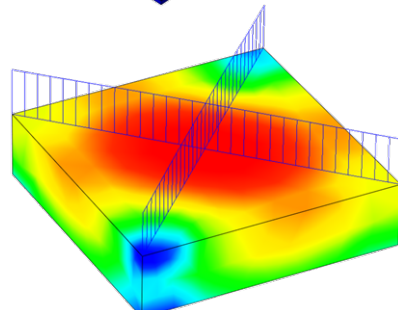
分析結果



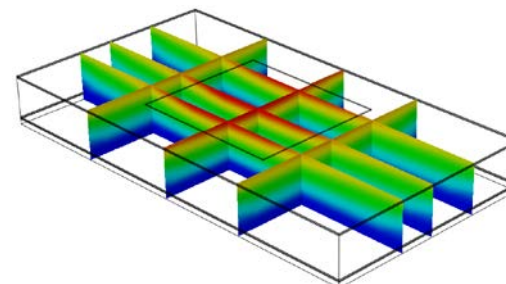
<密封劑溫度分佈>



<焊料溫度分佈>



<芯片溫度分佈>



<PCB板溫度分佈>

自動門安全裝置-接觸分析 midas NFX

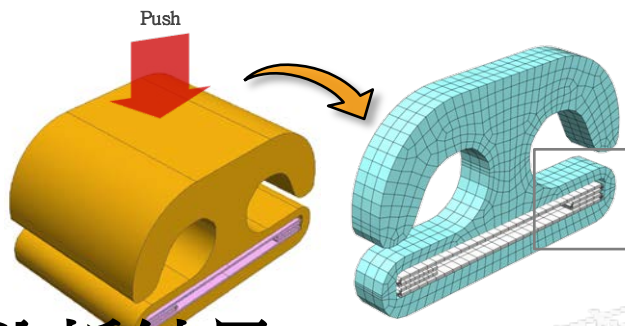
●NFX求解類型

- 幾何非線性
- 材料非線性
- 接觸非線性

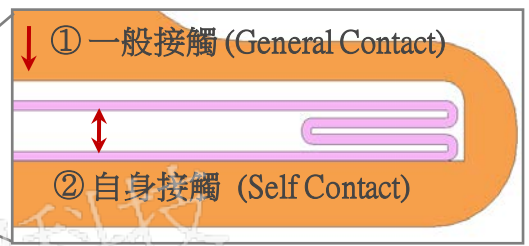
產業應用案例



邊界條件

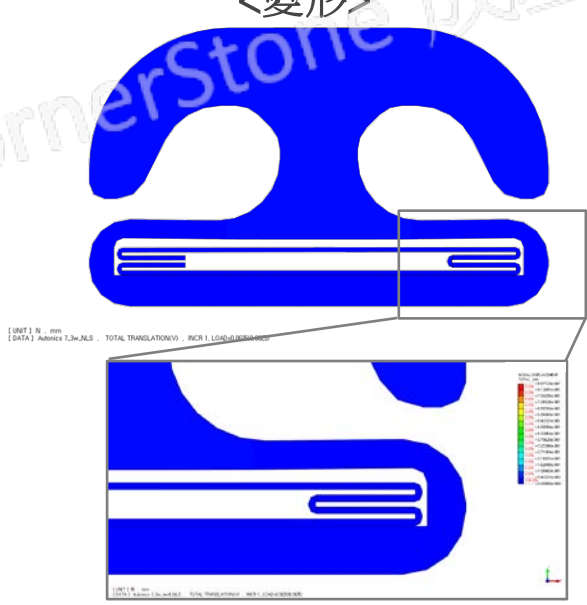


自動門安全裝置-傳感器零件



分析結果

<變形>



<應力分佈>

